

Estate Planning Checkup: 10 Questions to Ask

TIGER 21 NEW YORK GROUP 15
APRIL 13, 2023

MARVIN E. BLUM, JD/CPA
The Blum Firm, PC
(817) 334-0066
mblum@theblumfirm.com

© 2023, The Blum Firm, P.C. All rights reserved.



MARVIN E. BLUM

THE BLUM FIRM, P.C.
777 Main Street, Suite 550
Fort Worth, Texas 76102
(817) 334-0066
mblum@theblumfirm.com
www.theblumfirm.com

MARVIN E. BLUM is an attorney and CPA based in Fort Worth, Texas. He is Board Certified in Estate Planning and Probate Law and is a Fellow of the American College of Trust and Estate Counsel.

Mr. Blum founded The Blum Firm, P.C. over 40 years ago. The firm specializes in estate and tax planning and the related specialties of asset protection, business planning, business succession planning, charitable planning, family legacy planning, fiduciary litigation, and guardianship. The Blum Firm has grown to be one of the premier estate planning firms in the nation, known for creating customized, cutting-edge estate plans for high-net-worth individuals.

Mr. Blum serves on the Editorial Advisory Committee for *Trusts & Estates* magazine. He is Treasurer for the Texas Cultural Trust.

Mr. Blum earned his BBA (Highest Honors) in Accounting from The University of Texas and received his law degree (High Honors) from The University of Texas School of Law.

Golden Age of Estate Planning

- Doubled estate tax exemption
- “Squeeze” Planning with valuation discounts
- “Freeze” Planning with Grantor Trusts
- Lock in interest rates before they rise more

Warning: Given the current political climate, the Golden Age won't last forever. Legislative proposals grandfather planning completed prior to passage of new tax laws.

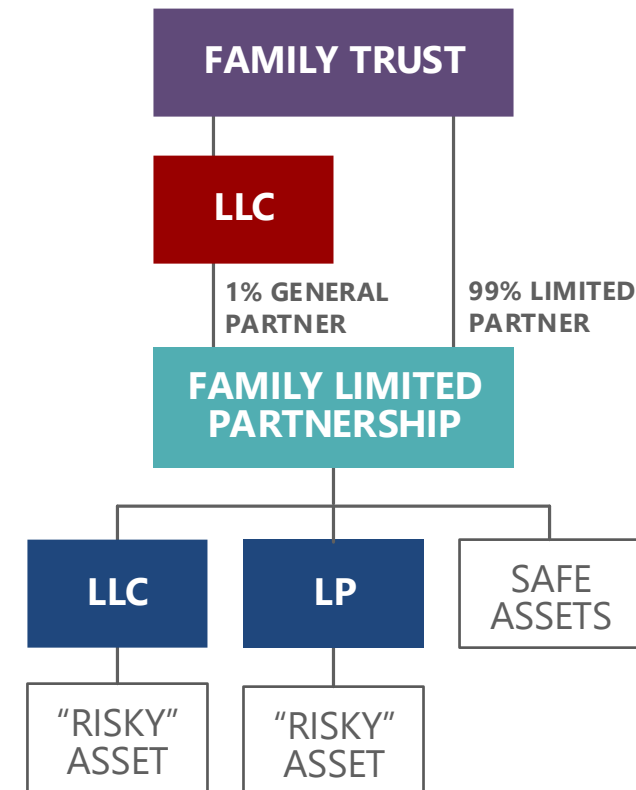
1) Do you own anything in your name (other than retirement accounts)?

If assets are titled in your name, it generally reveals two things, most likely, the assets are exposed to the claims of creditors. And, if the estate is above the exemption, the assets will likely be exposed to a 40% estate tax.

Step 1 – Examine each asset to determine if it is “safe” or “risky.” Risky assets (such as real estate or oil and gas) can give rise to claims. Put an entity wrapper such as a limited partnership (LP) or limited liability company (LLC) around each risky asset, so creditors can only reach the one risky asset and can’t reach other assets outside the entity wrapper.

Step 2 – Protect all assets from being exposed to personal creditors (such as a tort creditor) by transferring safe assets and the risky asset entities to a Family Limited Partnership (FLP).

Step 3 – Transfer the FLP interests to an irrevocable trust for another layer of asset protection and to remove assets from the taxable estate.



2) After you're gone, will your retirement assets be protected?

Naming children as outright beneficiaries of a retirement account may not be ensuring the best protection of the benefits.

Naming a trust as beneficiary instead places the funds out of reach of creditors of the trust's beneficiaries and makes the trust assets unreachable in the event of divorce. Also, any retirement funds remaining in the trust when the beneficiary dies may not be subject to estate taxes.

Normally when a trust is named as the beneficiary of an IRA, the payout is subject to a 5-year rule which requires the balance of the IRA be distributed (and taxed) to the trust beneficiaries within 5 years of the death of the IRA owner.

A special trust called an Accumulation Trust could be named as beneficiary to gain the asset protection qualities inherent to trusts and also "stretch out" the payout period. With an Accumulation Trust, IRA amounts must be paid out from the IRA to the Accumulation Trust within 10 years. The funds can then be held in the Accumulation Trust and dribbled out to the beneficiary as needed.

3) If you died right now, would your children's inheritance potentially become divisible upon a divorce?

Any asset owned outright by either spouse is "marital property." All marital property is presumed to be community property. The burden of proof is on the party claiming an asset is separate property. Income from separate property is community property.

On the other hand, none of the assets that are owned by a properly structured irrevocable trust is marital property. Being "non-marital property" is even more protected than being "separate property." Non-marital property does not generate community property income and is not divisible upon divorce.

I recommend leaving the inheritance to dynasty trusts for the benefit of children and future generations.

4) Have you taken advantage of the doubled estate tax exemption?

On December 31, 2025, each person's remaining exemption amount will decline by approximately \$6.5 million. To lock in the benefit of the entire doubled exemption, a couple has to transfer \$25.84 million out of their estate (2023 exemption amount).

If a couple only gives \$12 million, make the gift entirely from one spouse and don't gift split. If you gift split, each spouse gives \$6 million; after sunset, neither spouse will have any exemption left. If one spouse gives the entire \$12 million, then, after sunset, the other spouse still has a \$5 million exemption (adjusted for inflation).

The most popular way for married couples to use each spouse's gift/estate tax exemption is for each spouse to create a trust for the benefit of the other because doing so preserves the resources for the spouses' benefit. This type of trust is often referred to as a Spousal Lifetime Access Trust (SLAT).

The two SLATs must be substantially different to avoid violating the Reciprocal Trust rule.

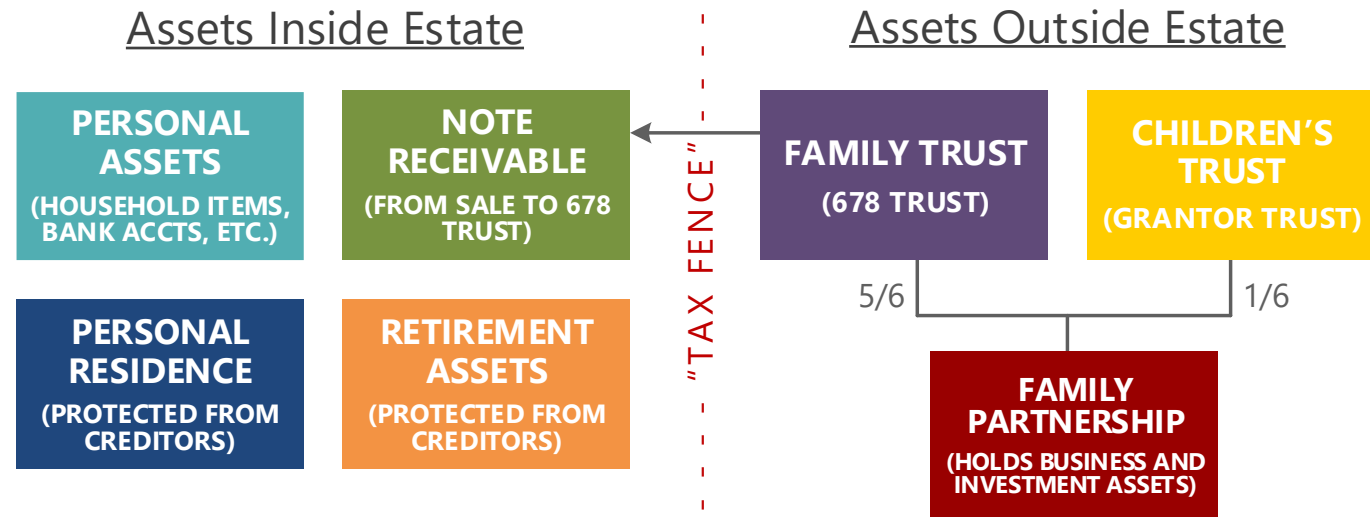


5) Can you have your cake and eat it too?

How can you get assets out of your estate but still have access and control?

If your goal is to transfer appreciating assets out of your estate while continuing to retain access to the trust assets and control of trust investments, consider a 678 Trust. Essentially, a 678 Trust allows a beneficiary to be treated as the owner of the trust for income tax purposes, provided it is properly drafted.

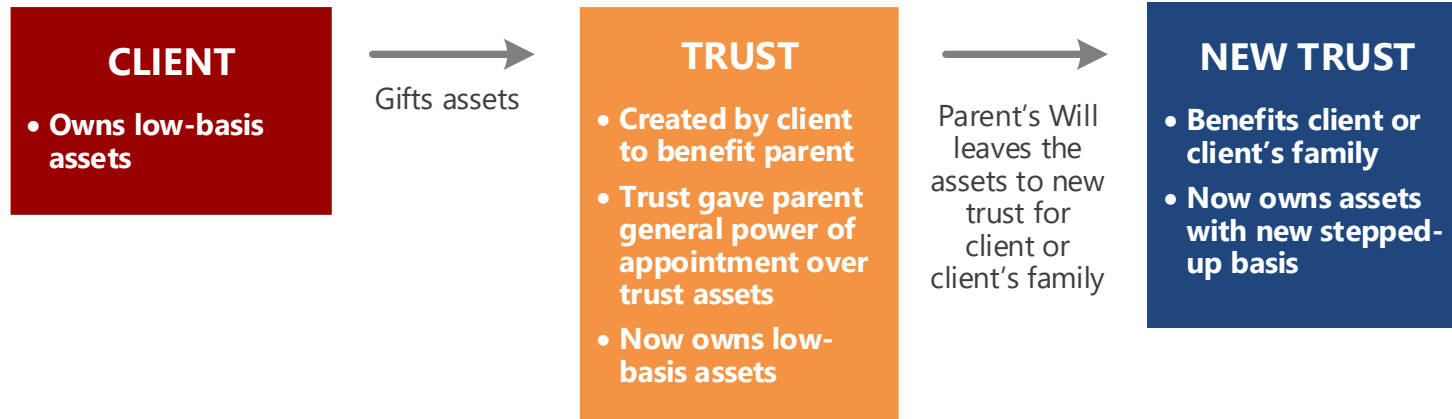
With a 678 Trust, you can access to the trust's funds for health, education, maintenance, and support purposes and can serve as trustee of the trust. Moreover, upon your death, the trust assets will not be subject to estate taxes. Assets owned by the trust are also not subject to the claims of your creditors.



6) Do you have any low basis assets?

If you have appreciated assets, you may need some “upstream” planning.

If you have low-basis assets and a parent has unneeded exemption, you could gift the assets to the parent outright or, even better, to a trust for the parent and give the parent a General Power of Appointment over the assets. (Note that the gift eats into your exemption.)

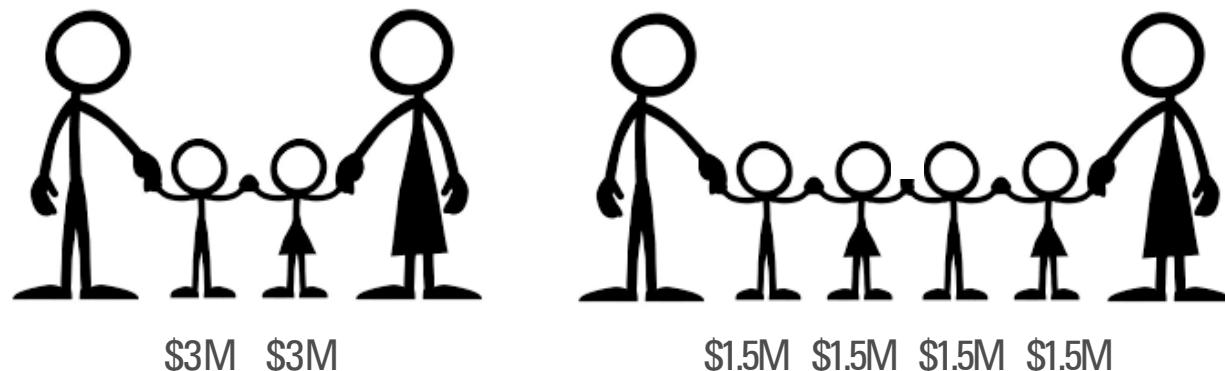


7) Do you love your grandkids equally?

With a traditional per stirpes inheritance, grandchildren with more siblings will receive less than grandchildren with fewer siblings.

Assume Generation 1 has a son with 2 children, a daughter with 4 children, and a \$12 million estate. After Generation 1 dies, the son and daughter each receive \$6 million. However, after the son and daughter (Generation 2) dies, the son's children each receive \$3 million while the daughter's children each receive \$1.5 million.

To lessen this blow on the cousins, consider taking out a life insurance policy that goes to all the grandchildren per capita. The rest of the estate plan remains intact. This creates new assets to use for gifting to Generation 3 without disrupting Generation 2's inheritance.



8) Do you have a “Red File”?

People in seemingly excellent health can go quickly and unexpectedly. Imagine you died suddenly or become incapacitated. Do those closest to you have all the information they will need?

Create a “Red File” for what estate planning documents don’t cover.

- Section 1 - Centralized File of Personal Information: Passwords, contacts, listing of assets you own, location of assets and documents.
- Section 2 - Business Continuity Plan: Your will says who will own the business, but not who will manage it. Give your family management succession guidance to facilitate the transition for the day WHEN (not IF) you are gone.
- Section 3 - Plan for Incapacity: Who will provide care, will they be compensated, where will you live, favorite TV shows, movies, colors, foods (don’t make your caregiver guess).
- Section 4 - Legacy Plan: A Red File is the ideal place to document the “heart” side of your estate plan. Provide information on ancestors, obstacles they overcame, meaningful memories, lessons learned, values, and goals for the family.

Download our Red File Checklist here: www.theblumfirm.com/2023/Red-File-Checklist.pdf

9) Do you have a business succession plan in place?

Why is business succession planning such a hot topic? As baby boomers age, many of us seem to think we're going to live forever and have done no business succession planning.

Before you can start developing a plan, the founder needs to decide if the business will be passed down in the family or sold. There are 3 primary choices in the toolbox when thinking about succession planning:

- Transfer the business to a family member/family members.
- Sell the business to people within the business.
- Sell the business to an outside party.

To start the process, form a planning team (CPA, attorney, financial advisors) and bring all the key stakeholders to the table to develop a plan and implement the succession process.

10) Are you worried an inheritance will ruin your children?

We have all witnessed the disaster when an inheritance passes into unprepared hands. Families who succeed engage in best practices like family meetings and family education, all aimed at preparing heirs to be responsible inheritors. A FAST (Family Advancement Sustainability Trust) equips your family to remain healthy and connected through the generations.

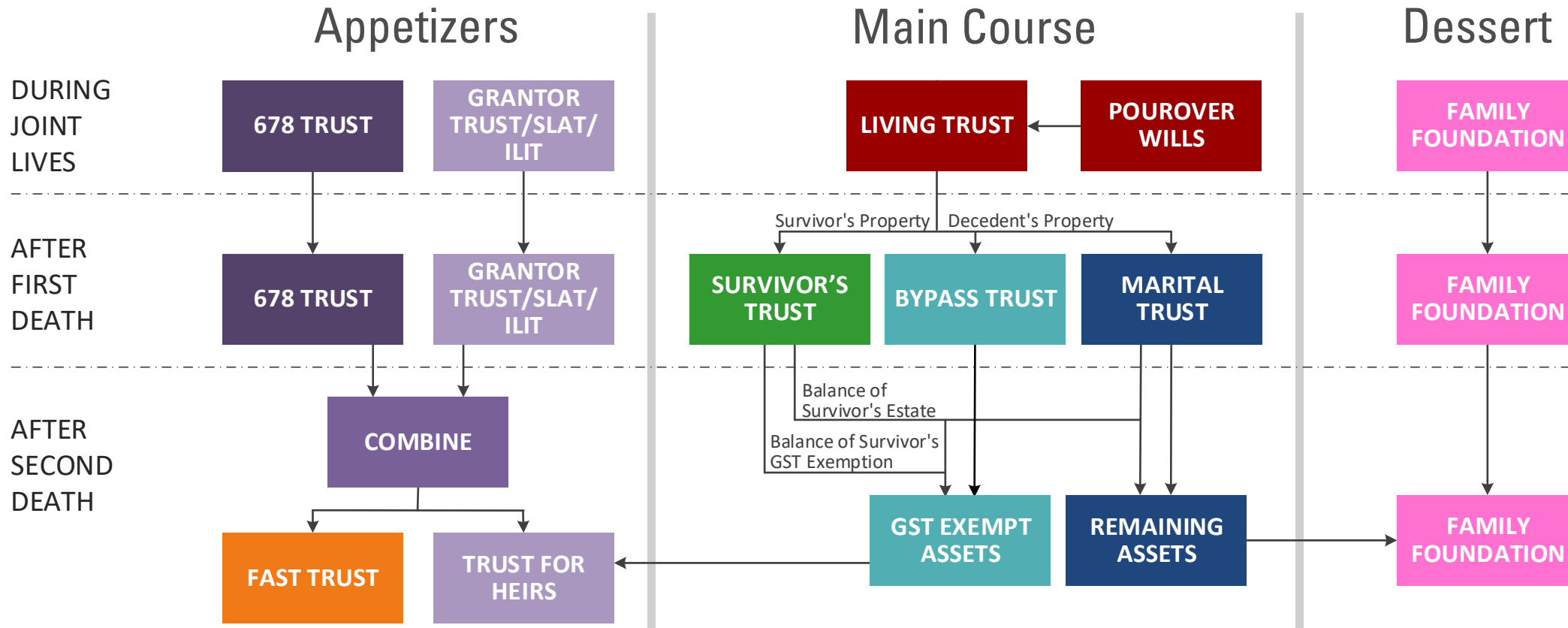
In a nutshell, the FAST does two things:

- 1) It is funded with assets that will be used to pay for family enrichment and family education activities such as family retreats, family travel, and preserving the family's heritage, as well as maintaining legacy real estate assets the family wants to pass down to future generations; and
- 2) The FAST appoints trustees/committees who are paid to do the legwork in planning these activities and making sure they happen.

The end result is a gift to your family of a meaningful and lasting legacy.

A FAST is an add-on to a traditional estate plan, often funded with life insurance.

The Optimal Estate Plan



Leave your heirs three inheritances: a traditional inheritance, a philanthropic inheritance, and a FAST Trust.

MARVIN E. BLUM, JD/CPA

The Blum Firm, PC
777 Main Street, Suite 550
Fort Worth, Texas 76102
817-334-0066
mblum@theblumfirm.com



If you'd like to be added to the distribution list for my weekly email series on Family Legacy Planning, send me your email address.